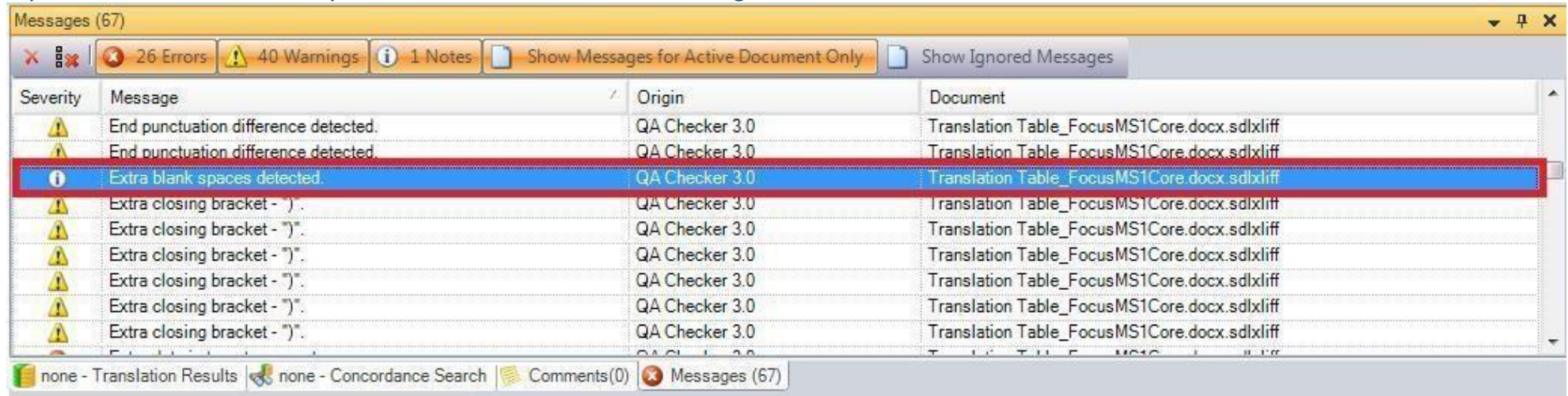


If you run verification checks you can see list of all issues in Messages window.



Also, to better see any issues with whitespaces while translating the translators should have the options Show Whitespaces Characters on.

Before you deliver to us, please run verification checks and if needed fix any issues.

It is strongly advised to edit the template you're using to use these settings as default to ensure there's no need to set these for every project manually.

Note.: There may be slight differences as to where you can access the settings, depending on which version of Studio you're using, e.g. from Studio 2014 onwards, there's no need to set tag verification settings for each file type, there's a common setting under verification.

Please use the following verification check settings (unless the nature of the respective translation requires further checks):

Project Template Settings - Default

- Project Template
- File Types
- Embedded Content Processors
- Verification
 - QA Checker 3.0
 - Segments Verification**
 - Segments to Exclude
 - Inconsistencies
 - Punctuation
 - Numbers
 - Word List
 - Regular Expressions
 - Trademark Check
 - Length Verification
 - QA Checker Profiles
 - Tag Verifier
 - Terminology Verifier
- Language Pairs
- Default Task Sequence

Segment Verification

Forgotten and empty translation

Check for forgotten and empty translations Error

Compare source and target segments

Check for segments where:

Source and target are identical Warning

Ignore tags

Ignore case

Check for target segments which are:

Shorter by (%) 50 Warning

Longer by (%) 50 Note

Ignore segments with fewer than # words: 2

Based on words

Based on characters

Check target segments

Check for forbidden characters Error

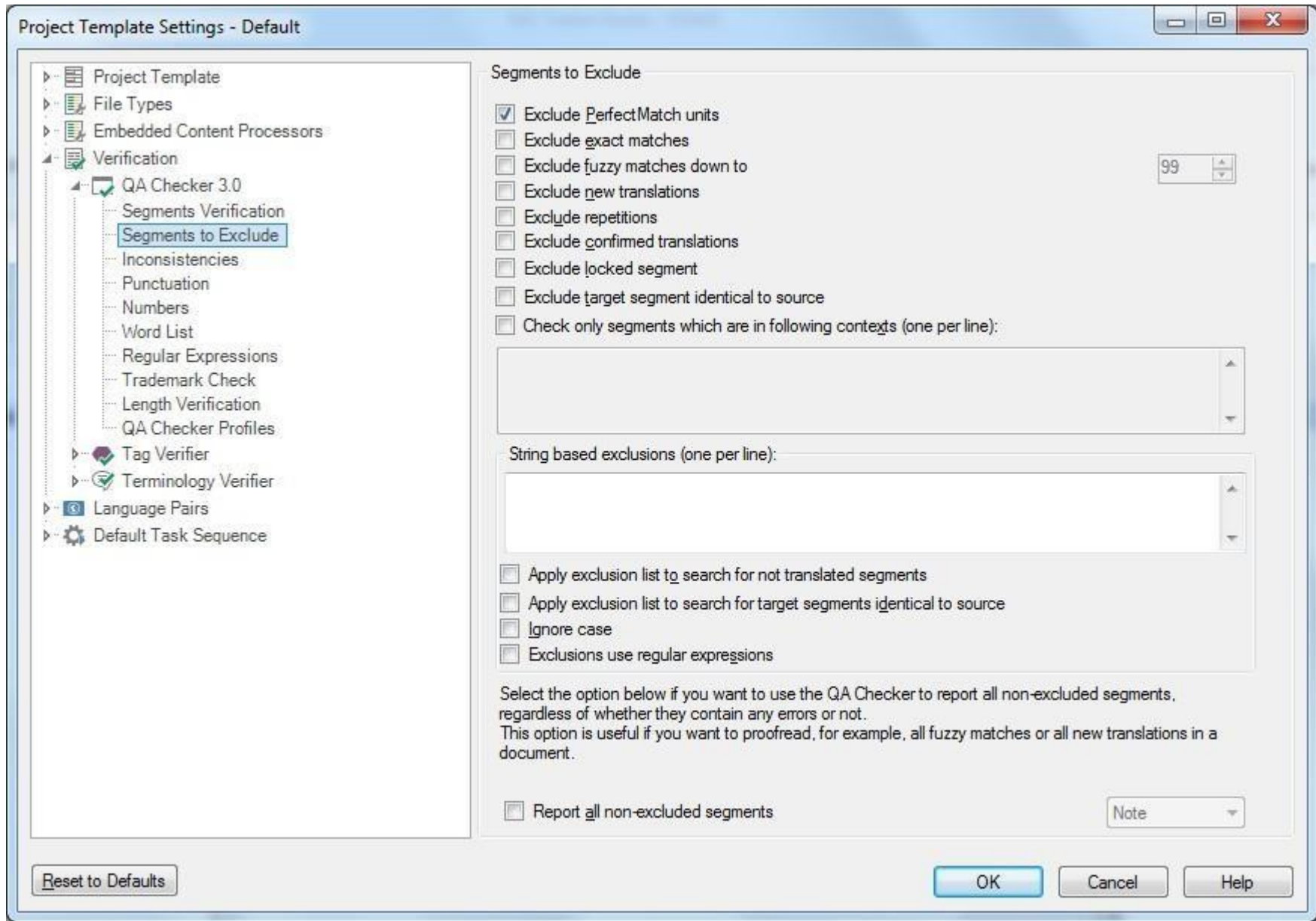
(no delimiter required)

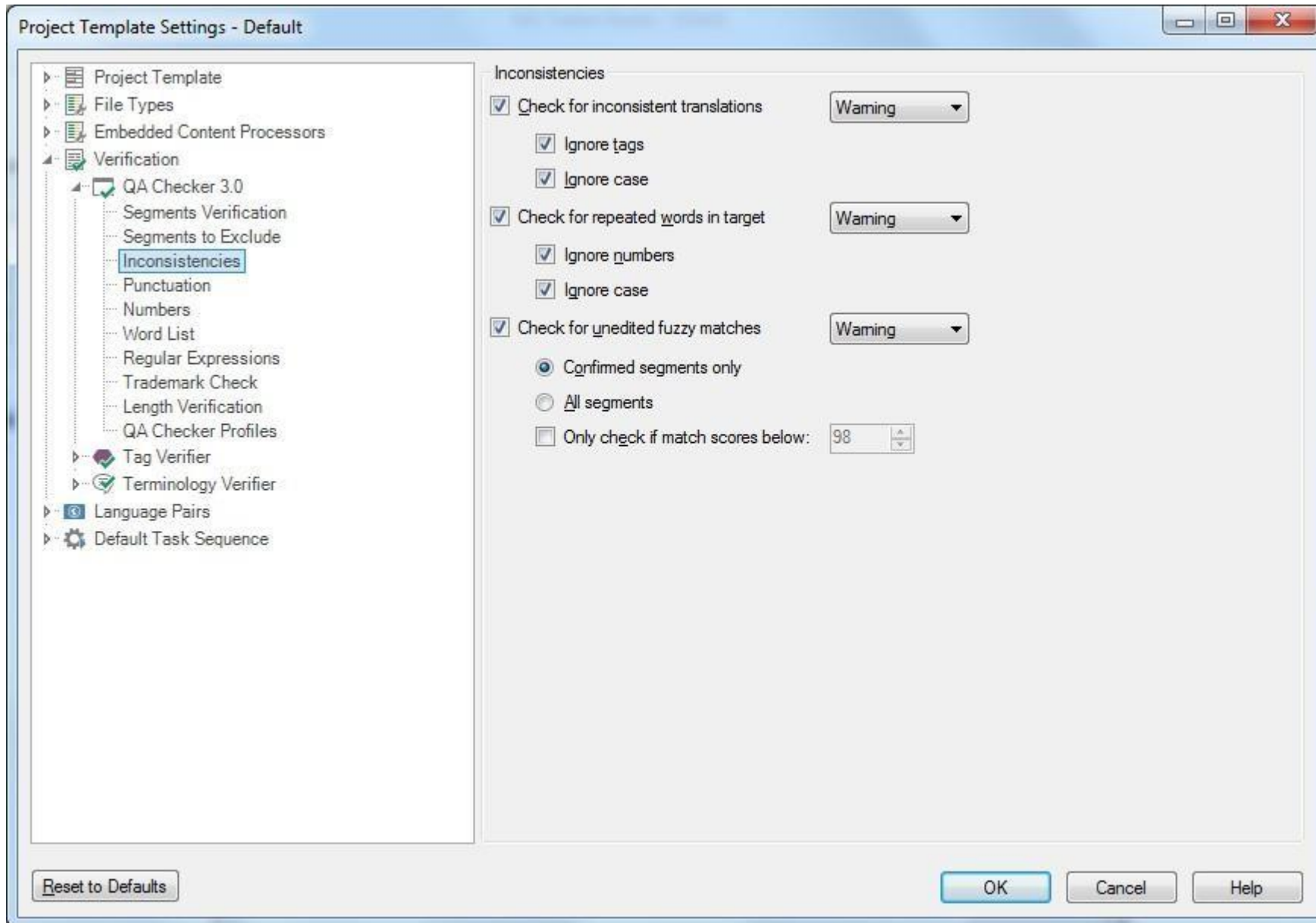
Reset to Defaults

OK

Cancel

Help





Options

- Editor
- AutoSuggest
- File Types
- Embedded Content Processors
- Verification
 - QA Checker 3.0
 - Segments Verification
 - Segments to Exclude
 - Inconsistencies
 - Punctuation**
 - Numbers
 - Word List
 - Regular Expressions
 - Trademark Check
 - Length Verification
 - QA Checker Profiles
 - Tag Verifier
 - Terminology Verifier
- Language Pairs
- Default Task Sequence
- Translation Quality Assessment
- Translation Memories View
- Colors
- Keyboard Shortcuts
- Automatic Updates
- Welcome View

Punctuation

End punctuation

Check that source and target end with the same punctuation Warning ▾

Check for Spanish punctuation (¡,¿,! and ?) Warning ▾

Check for unintentional spaces before: Warning ▾

French compliant check (spaces are intentional)

Extra dots and spaces

Check for multiple spaces Note ▾

Check for multiple dots Note ▾

Ignore ellipsis dots (...)

Check for extra space at the end of target segment Warning ▾

Capitalization check

Check capitalization of initial letters Warning ▾

Check consistency of global capitalization Warning ▾

Check for brackets

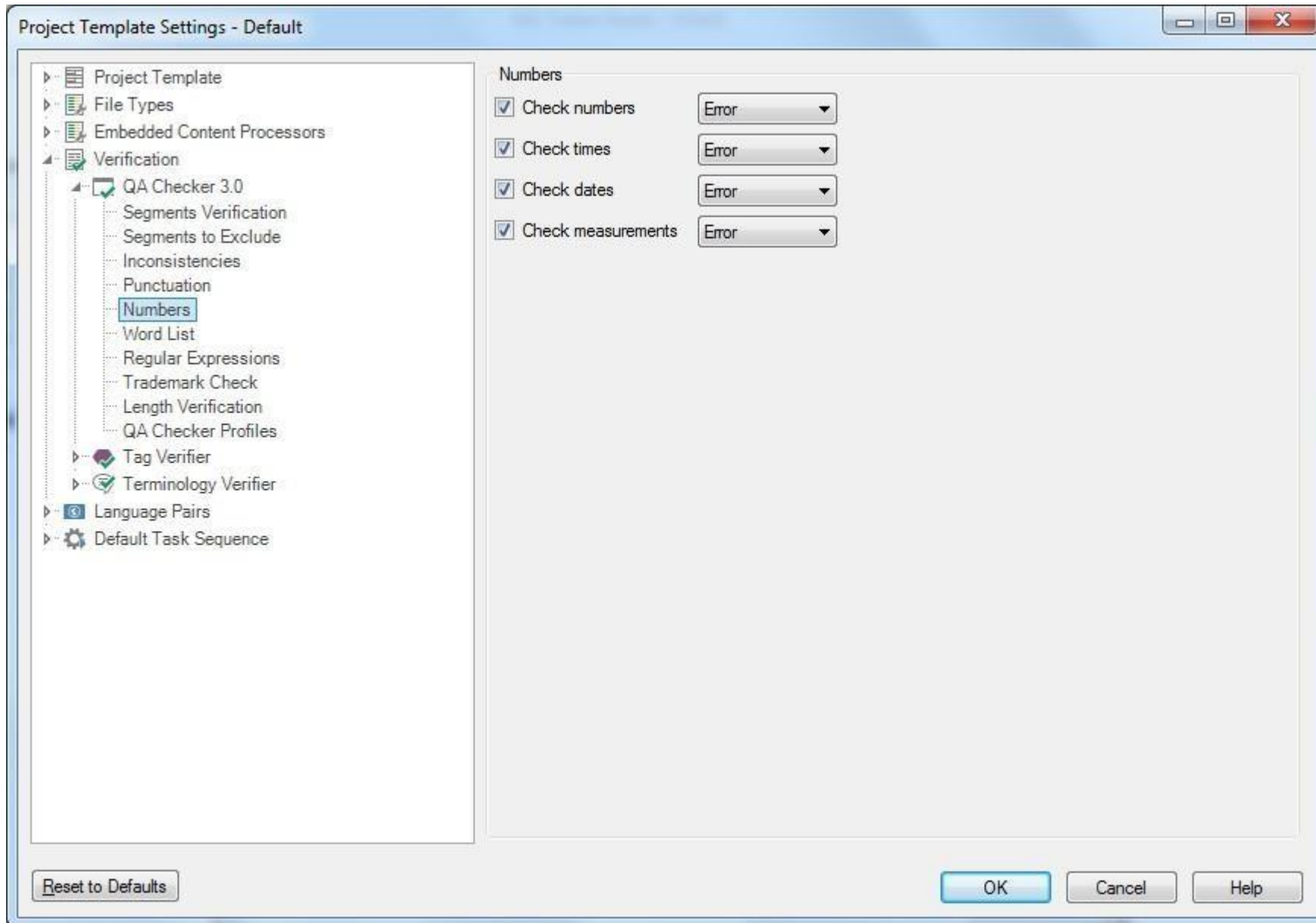
Check brackets Warning ▾

Reset to Defaults

OK

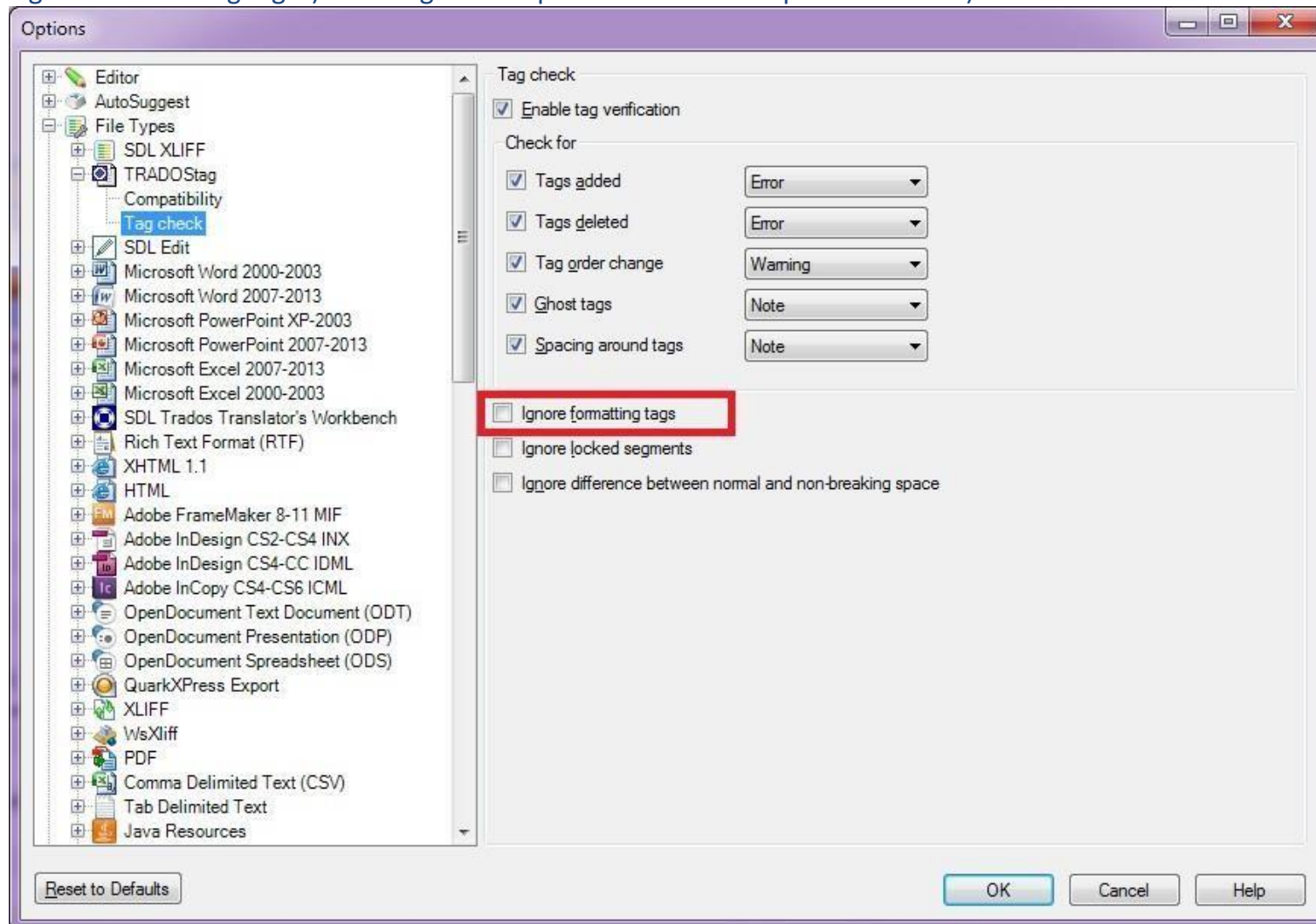
Cancel

Help

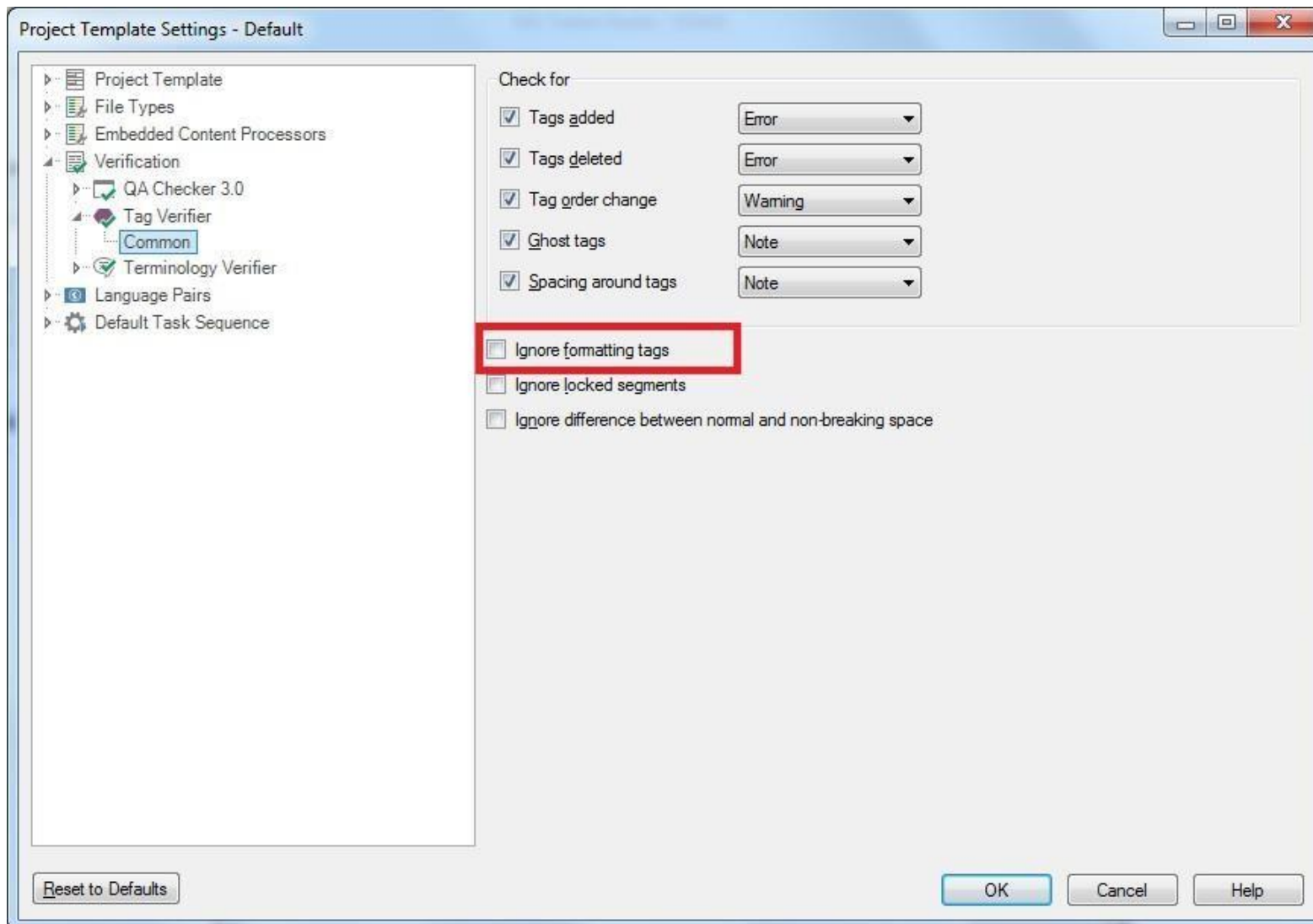


Tag verification in Studio 2009 and 2011: By default Studio ignores formatting tags. So in order to verify the formatting, we would need to go to the file type "(Project settings > File types > ***relevant file type*** > "Tag Check") and deselect the option

“Ignore Formatting tags”) in the right-hand panel below the drop-down menus).

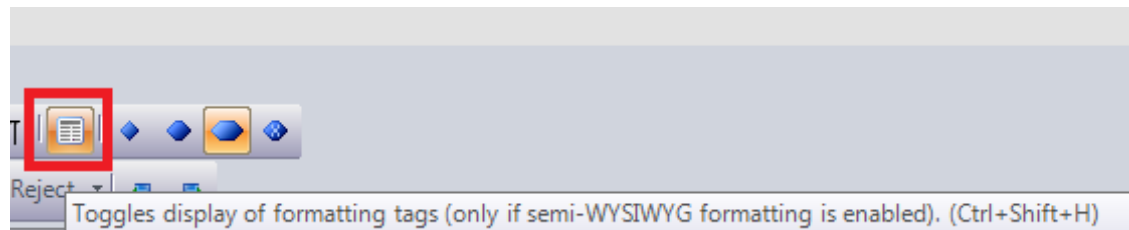


For tag verification in Studio 2014 and above, there's no need to change tag verification settings for each file type anymore, the option has been moved to verification options:

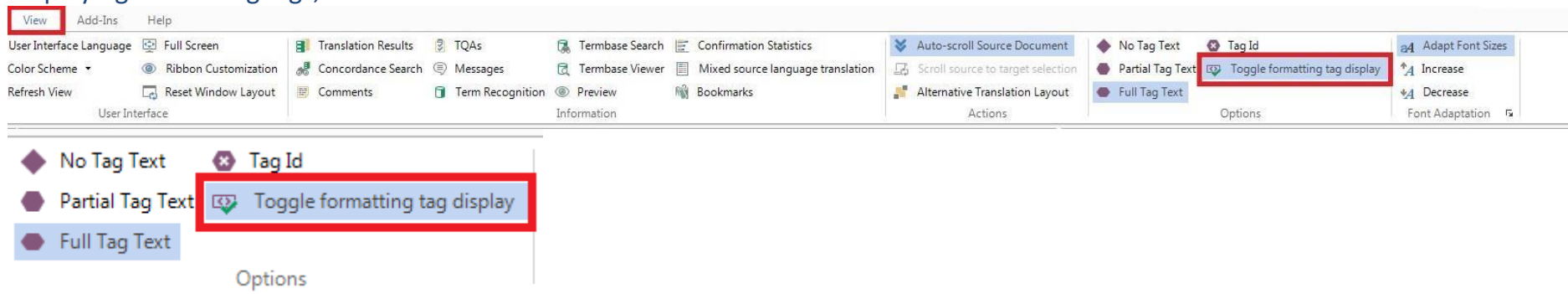


To be able to check the formatting tags, it is strongly advised to view formatting tags during translation, and it is a must during verification.

Displaying formatting tags, Studio 2009, 2011:



Displaying formatting tags, Studio 2014 and above:



I hope it is clear. Please let me know if you have any questions.